

INNOVATIVE
PRODUCT

There is always a way out
where the light shines through...



EMERGENCY LIGHTING

Automatic activation in the event of **fire**, **earthquake**, **flood** and **electrical breakdown**, which might cause power cuts and failure of normal lighting.



WHAT IS EMERGENCY LIGHTING ?



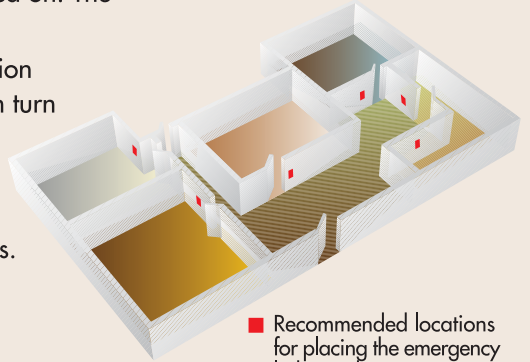
Powerful white light emitting diode (LED) in the center of the device switches on in the event of power loss in emergency conditions and visually facilitates orientation in the building for approximately 11 hours.

How does it operate?

The device activates after the local automatic switch and is kept in passive position (battery charge mode). In the event of a power loss the device activates and a powerful lighting source (LED) switches on. When the electrical power is restored, the device deactivates and switches back to the battery charge mode.

What should we know?

- To operate the device the phase and the neutral, directly outgoing from the main feed, must be switched on. The device is designed for concealed mounting.
- When the switch is placed in the "OFF" position the device is completely deactivated, which in turn extends the battery service life.
- Charging stops automatically when the battery is fully charged.
- Fully charged battery operates up to 11 hours.
- By default the button is in the "OFF" position.

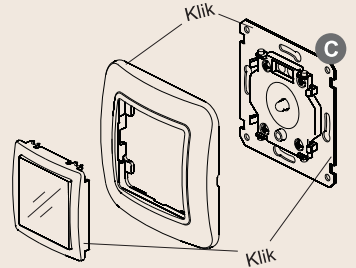
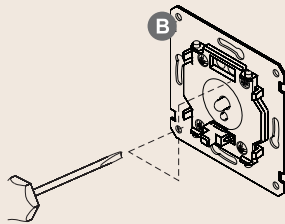
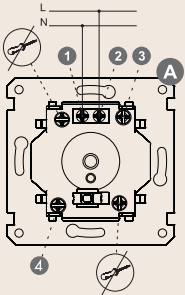


■ Recommended locations for placing the emergency lighting device.

MOUNTING

- Secure cables and fasten the screws 1 and 2 as shown in Figure A.
- Fix the device to the wall by fastening the screws 3 and 4 as shown in Figures A and B.
- Replace the frame as shown in Figure C.
- Secure the transparent cover in place as shown in the diagram.

Make sure that the position of the device switch against the cover is correct.



Emergency lighting device is presented within Mimoza, Lillium, Lillium Natural and Cellia series.



www.makel.com.tr
makel@makel.com.tr

